

Dear Parents and Carers,

The Queen has become the second-longest serving monarch in world history. As of Monday, she has been on the throne for 70 years and 127 days, second only to Louis XIV of France who became King at the age of four. Louis XIV's reign of 72 years and 110 days was from 1643 to 1715. He only started to rule personally in his 20's, in 1661. The Queen became monarch at the age of 25, following the death of her father in the early hours of 6 February 1952. If the Queen is still ruling in May 2024 she would take the title of the longest-reigning modern monarch.



Next week sees our annual Arts Days. These are where we collapse the usual timetable to do activities that are creative in different forms. Music and Art play a big part, as does food technology in Year 8. Each year group does different things across the two days. Friday next is our summer Deep Day, when a deeper look at Bible stories prompts reflection on what these mean for us in today's world. Creative aspects also take place then too.



For the Lord is good; his steadfast love endures forever, and his faithfulness to all generations. *Psalm 100:5*



Our preparations for the forthcoming trips are complete. In the coming week, some of Year 8 will go to London on Wednesday, visiting the Science Museum and two theatres, seeing *The Play That Goes Wrong* as well as *Back to the Future—The Musical*. There will also be a couple of walking tours to cover 'some of the sights' with interesting facts (or rather, those things that I recall which are attached to particular places). Year 5 will depart for the Brecon Beacons for their outward bound activities, while Year 7 also go on the same morning for their woodland and beach events.

We do collect lost property, particularly in the form of bits of uniform, including PE kit, but also water bottles and lunch boxes. If it has a name on it, then a lost item can be given back to the pupil, as many pupils are very aware!



Rev. C. Leach, *Principal*

A prayer for The Ten Commandments

Lord, Thank you for your commandments and your rules, they help us to live as you want for us and they bless our relationships with others. We pray for our government and our country that they can see that your commandments are at the core of law, and that they should continue to be looked upon to help rule this country. We thank you for your guidance and pray you can guide our rulers too.

Amen.

This week's theme was: The Ten Commandments

He proclaimed the laws you must obey - the Ten Commandments - and wrote them on two stone tablets.

Deuteronomy 4:13

Whole School Target

95.6%

Whole School Attendance

92.8%

Congratulations to the following tutor groups 99%+ for the week commencing 6.6.2022

CMGR



For the week ahead

The Fruit of Faith is:	Honour	I have honoured my followers in the same way that you honoured me, in order that they may be one with each other, just as we are one. John 17:22
The assembly theme:	Human Rights	Truly, I say to you, as you did it to one of the least of these my brothers and sisters, you did it to me. Matthew 25:40

We ask for your thoughts and prayers in the week ahead for:

The weekend	composers and players of all forms of music	Monday	Dr John Inge, Bishop of Worcester
Tuesday	the UK's Public services	Wednesday	successful Arts Day, with lots of fun
Thursday	A successful Deep Day	Friday	Enjoyment for the pupils on the residential trips

Picture of the Week

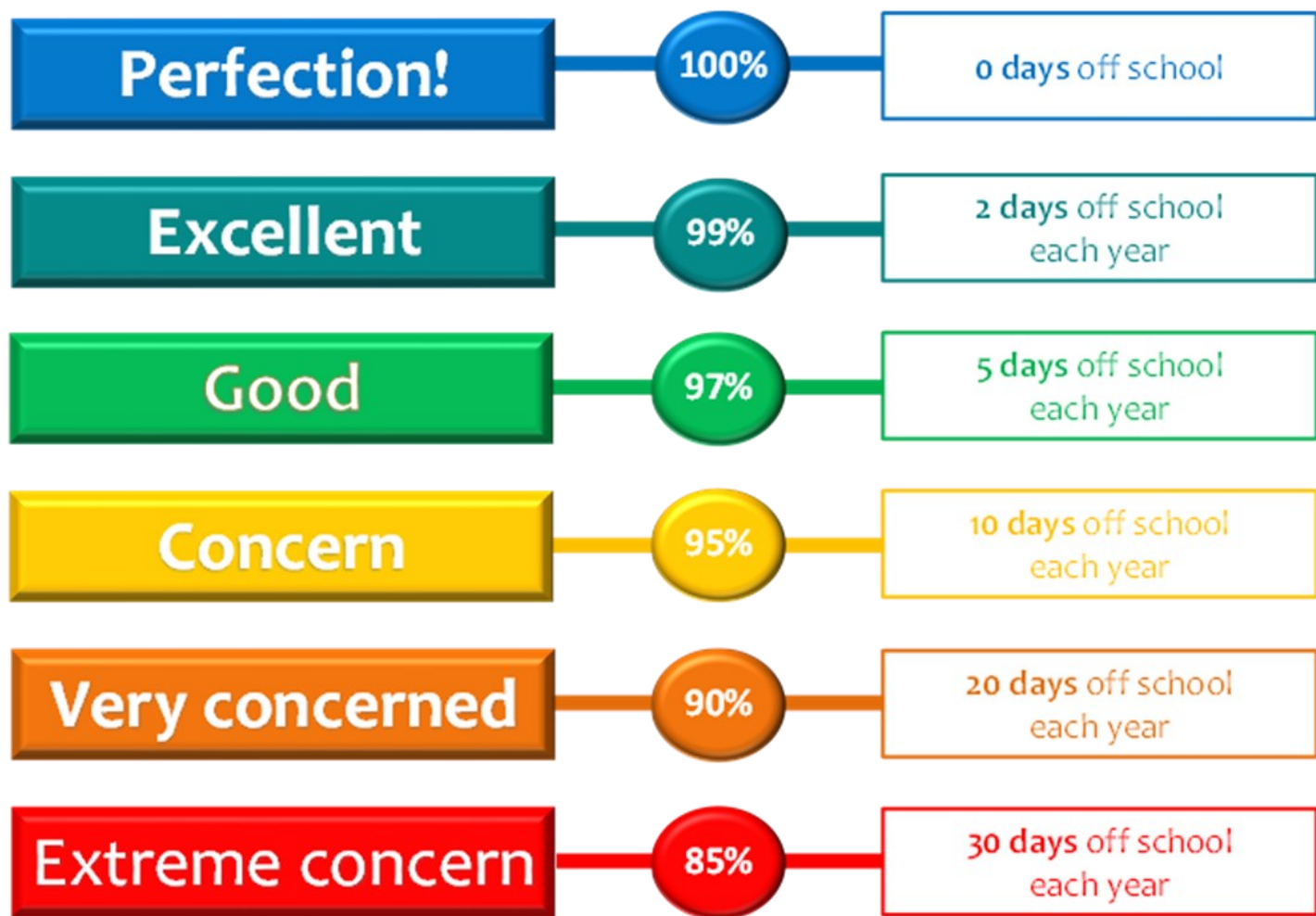


Daniel Jones

The harbour at John O'Groats, Scotland



Every School Day Counts



Up to 5 days absence over the whole year
97% - 100%
Good chance of success and progress

20 days absence over the whole year
90%
Less chance of progress and harder to progress

20+ days absence over the whole year
Under 90%
Much, much harder to progress and feel successful



5

minutes late each day = 3 school days lost per year

15

minutes late each day = 10 school days lost per year

20

minutes late each day = 14 school days lost per year



Clubs and Activities

Summer term 2 2022

	Before School 7:45am – 8:45am	Lunchtime 12.35 – 1.20PM	After School 3:30pm – 4:45pm
Monday		Lexia LMo in ITA	Homework Club PMC/RDJ- KS2 tennis - start Monday 13 th June (sign up only. Meet in the changing rooms with all your belongings)
Tuesday	Orchestra CGR 8.45am - 9.25am Music Room	Lexia ZBi in ITA	Homework Club PMI/ PMC- KS2 boy's cricket- start Tuesday 14 th June (sign up only. Meet in the changing rooms with all your belongings) KRE- KS3 rounders - start Tuesday 14 th June (sign up only. Meet in the changing rooms with all your belongings)
Wednesday			Homework Club Year 7 and 8 Cricket 3.35-4.45pm (PJE/LWO) KRE/ RMA- KS2 rounders – start Wednesday 22 nd June (due to parents evening)
Thursday		Choir CGR 12.55pm - 1.20pm Music Room All Year Groups	Homework Club CHU/ RDJ – all girl's cricket – Start Thursday 16 th June
Friday			

Homework Club

Please note Homework Club will finish on the 30th June for this term.



What Parents & Carers Need to Know about

TWITCH

Twitch is a livestreaming service which tends to focus on gaming. Users can publicly broadcast their gameplay and commentary online for other users to watch. It's a community-driven platform where viewers can support their favourite streamers' channels through PayPal donations, "Bits" and more. Each streamer or group creates their own community for fans to interact with each other. Twitch has more than 15 million daily active users and includes non-gaming topics such as music, cooking and art. Anyone can create a channel to livestream or watch videos.

WHAT ARE THE RISKS?

UNCENSORED STREAMS

Uncensored content obviously carries a greater risk of inappropriate language and behaviour (streamers can, however, list their broadcast as unsuitable for children). Twitch has strict rules for streamers to follow, but requires viewers to report any streams which breach these guidelines. Each livestream is accompanied by a text chat which it is the streamer's responsibility to moderate.

INAPPROPRIATE CONTENT

Most people are already aware that some video games feature adult content such as violence, sexual content, profanity and so on. Twitch does prevent certain games from being streamed on the platform, but most are still allowed. It is relatively simple, then, for a child to find livestreams of games that aren't suitable for them - including horror games.

HIDDEN COSTS

Twitch is free to use because it's supported by advertisers. Removing the ads requires a subscription to Twitch Turbo - or the Twitch Prime package (free for anyone with an Amazon Prime account), which blocks the ads and offers additional goodies such as bonus games. Streamers earn most of their income by asking users for direct donations or gifts of the virtual currency Twitch Bits.

CONTACT FROM STRANGERS

As well as streamers talking directly to their audience, Twitch enables viewers to use text chat to speak to the person they're watching. It's a social platform which also allows viewers to interact with each other via text while they are watching livestreams - including exchanging private messages. This raises the possibility of a child being approached and messaged online by total strangers.

WEBCAM SHARING

It's common for streamers to use their live webcam footage. This allows better interaction with their viewers, but also adds risk: the stream might include sponsored content or product placement that isn't child friendly. Using a webcam in livestreams increases the chance of malicious viewers finding out where the streamer lives and provides bullies with visual reactions to their hurtful behaviour.

PRIVATE CHAT ROOMS

Twitch encourages streamers to create their own communities, which extend beyond its platform. Many create a public Discord group, for example, for viewers to join and communicate with each other. Discord is a completely separate entity to Twitch and offers a higher risk of predators, grooming and cyberbullying if your child gets involved in the voice or video chat with strangers.

Advice for Parents & Carers

EXPLORE IT YOURSELF

Twitch doesn't have any parental controls, but it is possible to block troublesome users if it becomes necessary. The best solution is to watch some Twitch channels by yourself or with your child to find some that are suitable. Watching some streams by yourself is also a good route to understanding the sort of content that your child would be consuming regularly on Twitch.

LEARN HOW TO BLOCK

"Security and Privacy" in Twitch's settings lets your child block messages from specific users. Teaching your child how this works will help them avoid online abuse. If they livestream, knowing how to block people in the chat also helps to prevent cyberbullying or harassment. Evading online interaction is impossible, of course, so talk to them in advance about boundaries and safe online communication.

WATCH WHAT THEY WATCH

Twitch does have a lot of child-friendly content; some streamers use a 'family friendly' tag to highlight material that's suitable for children. However, anyone can use this tag - including users who (accidentally or otherwise) stream games with less appropriate adult themes. The best way to counter this is to view different streams and follow suitable channels for your child to watch.

LIMIT PAYMENT OPTIONS

Reduce the chance of accidental purchases by ensuring your bank card isn't saved on Twitch or the Amazon account that Twitch Prime could be linked to. Restricting access to your PayPal account is also wise if your child watches Twitch on the device you use to make purchases. Explain to your child that they don't need to subscribe to channels to watch them and that donating or gifting 'Bits' is optional.

Meet Our Expert

Clare Godwin (a.k.a. Lunawolf) has worked as an editor and journalist in the gaming industry since 2015, providing websites with event coverage, reviews and gaming guides. She is the owner of Lunawolf Gaming and is currently working on various gaming-related projects including game development and writing non-fiction books.



National Online Safety®

#WakeUpWednesday

Word of the Week

This week's Word of the Week:

justify

What word class is this word? Could it belong to more than one word class?

How many syllables does it have?

Write the dictionary definition(s) of this word, using your own words.

Are there any synonyms for the word?

Are there any antonyms for the word?

Write four sentences, each containing the word.

Challenge: vary the type of sentence each time: write one as a statement; one as a question; one as a command and one as an exclamation sentence.

For example, if the *Word of the Week* were joyous:

Statement: Xavier is feeling joyous this morning.

Question: Does that music sound joyous to you?

Command: Make yourself look a little more joyous.

Exclamation: What a joyous evening!

Show your tutor your notes on Word of the Week and receive a merit for answering the questions above!



Top Readers for 16th May 2022 — 16th June 2022

Congratulations to:

Top Girl

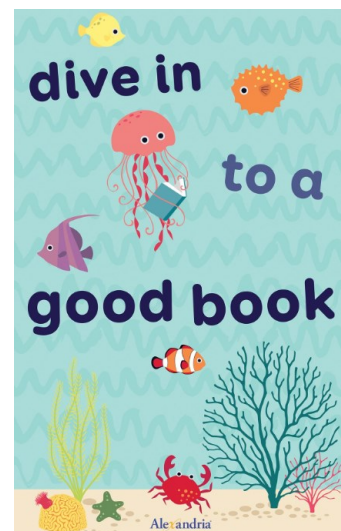
Amna Hussain (BAFA) - who has read 719,078 words

Top Boy

Mikaaiyl Farhan (BAFA) - who has read 548,661 words

Well done - 3 merits will be awarded to you both.

Keep reading Walkwood, next week it could be YOU



Knowing our curriculum

For information about the curriculum for each year group, please select:



[Year 5](#)

[Year 6](#)

[Year 7](#)

[Year 8](#)



For information about specific curriculum subjects, you will find the calendars here:

[Art and Technology](#) [Computing](#) [Drama](#) [English](#) [French](#) [Mathematics](#)

[Music](#) [Physical Education](#) [Science](#) [Spiritual & Social Education](#)

Additionally, for [Careers](#)



For the overall rationale for the way we have put the curriculum together, or for how the pastoral system operates, please select:

[Curriculum Rationale](#)

[Pastoral Strategy](#)



Walkwood

Church of England  Middle School

For information about our school:

www.walkwoodms.worcs.sch.uk

Keeping children safe

The following information concerns how we continue to ensure that pupils are cared for within our school:

Early help: <https://www.walkwoodms.worcs.sch.uk/Content/files/19c6-Early%20Help%20Offer.pdf>

E-safety: <https://www.walkwoodms.worcs.sch.uk/E-Safety>

Anti-bullying: <https://www.walkwoodms.worcs.sch.uk/Content/files/f2c9-Anti-bullying%20Policy.pdf>

Attendance: <https://www.walkwoodms.worcs.sch.uk/Content/files/53d7-Attendance%202018.pdf>

Prevent: <https://www.walkwoodms.worcs.sch.uk/Content/files/25a5-Prevent%20Policy%202019.pdf>

Safeguarding: <https://www.walkwoodms.worcs.sch.uk/Safeguarding-and-Child-Protection>

<https://www.walkwoodms.worcs.sch.uk/Content/files/a297-Safeguarding%20Policy%202019.pdf>

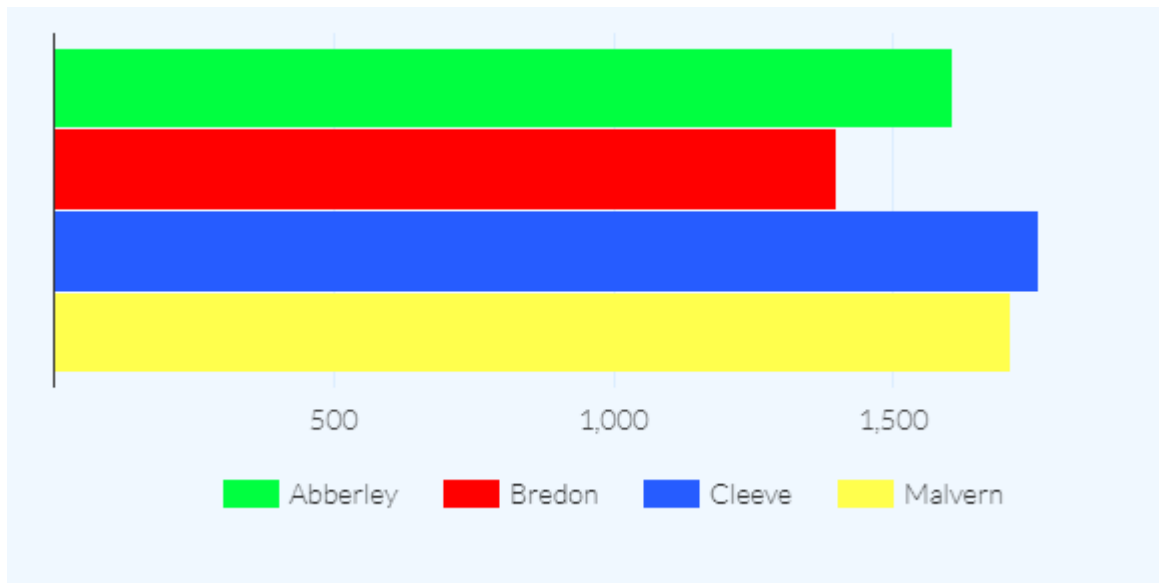
Relationships and Sex Education: <https://www.walkwoodms.worcs.sch.uk/Content/files/9ca0-Relationships%20and%20Sex%20Education%20Policy%202019.pdf>



Epraise Update



Points This Week: By College





Looking ahead



	Date	Event
20223	Tuesday 12 July	Summer Concert
	Thursday 21 July	End of Term
	Monday 5 September	Staff Development Day
	Tuesday 6 September	First Day of the Autumn Term
	Monday 24 - Friday 28 October	Half Term
	Friday 16 December	End of Term
	Tuesday 3 January	Staff Development Day
	Wednesday 4 January	First day of the Spring Term
	Monday 20– Friday 24 February	Half Term
	Friday 31 March	End of Term
	Monday 17 April	Staff Development Day
	Tuesday 18 April	First day of the Summer Term
	Monday 29 May - 2 June	Half Term
	Friday 21 July	End of Term